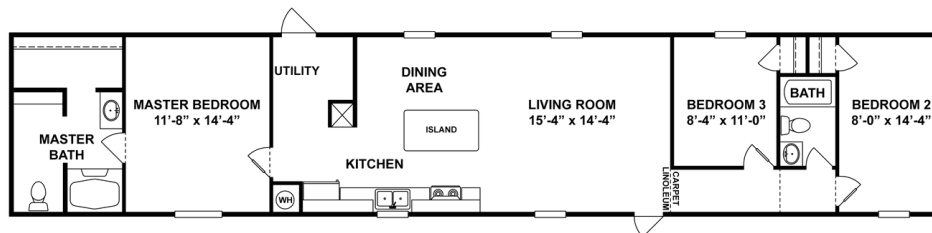




# THE MILLER



## THE MILLER Model number: 41PRF16763HH19

**3 beds • 2 baths • 1216 sq.ft. • 16' width • 76' depth**

Our home building facilities invest in continuous product and process improvements. Plans, dimensions, features, materials, specifications and availability are subject to change without notice or obligation. Renderings and floor plans are representative likenesses of our homes and may differ from the actual homes. We invite you to tour a Home Center near you and inspect the highest value in quality housing available or call (985) 872-2850 to speak with a Home Consultant. Copyright 2017, CMH. All rights reserved.

<https://www.claytonhomeshouma.com>

## CLAYTON HOMES-HOUMA

3936 HIGHWAY 311  
HOUMA, LA 70360

Monday - Thursday: Closed  
Friday: Closed  
Saturday: Closed  
Sunday: Closed

(985) 872-2850